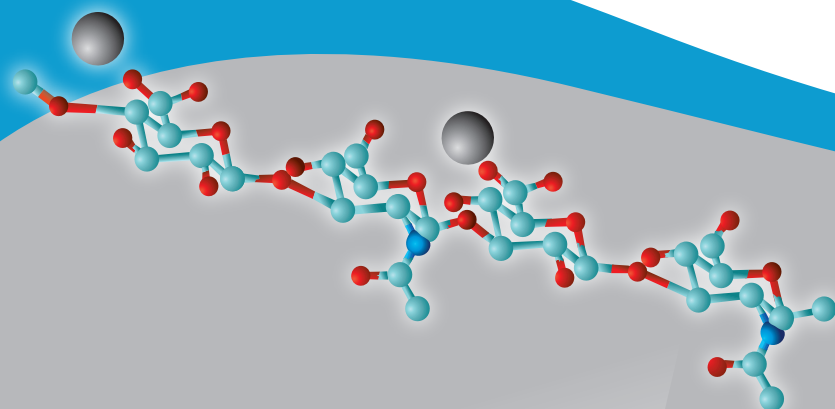


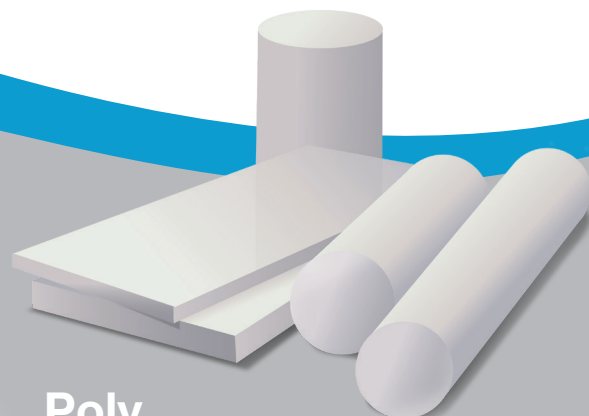
# BioPoly<sup>®</sup> RS

## Trochlea

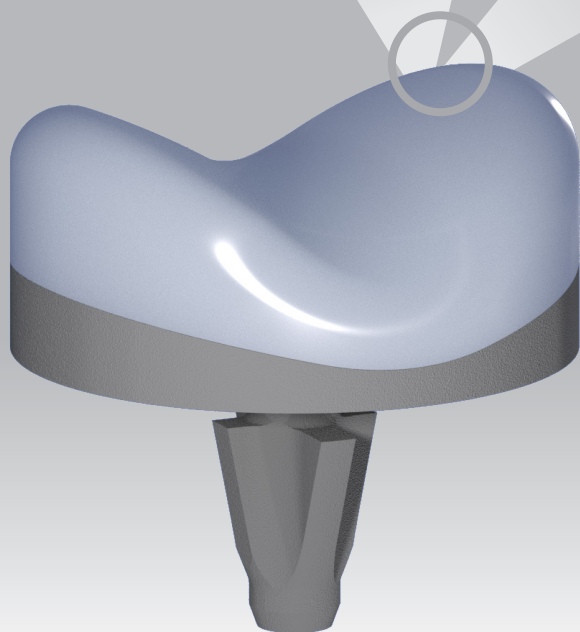
Trochlear groove partial resurfacing device made from a microcomposite of Hyaluronic Acid and UHMWPE



Bio  
Hyaluronic Acid



Poly  
UHMWPE



**BioPoly<sup>®</sup>**

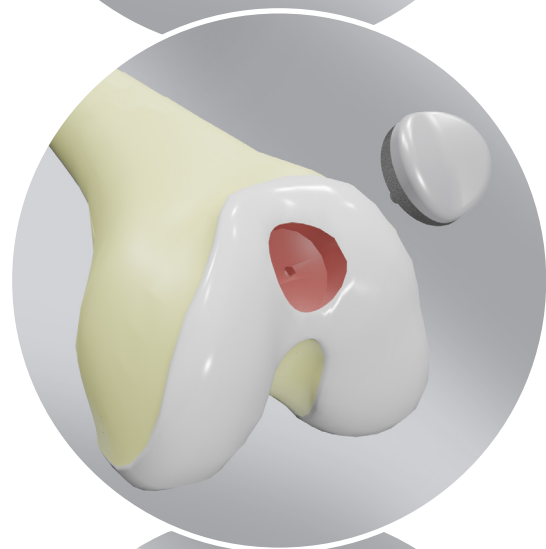
Hydrophilic polymer provides a smooth and lubricious surface to interact favorably with native joint tissues and carry anatomical loads

# BioPoly® RS Trochlea Implant

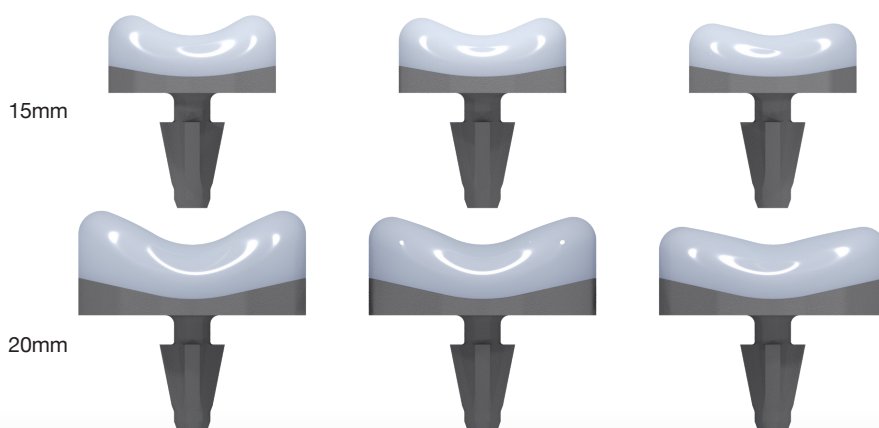
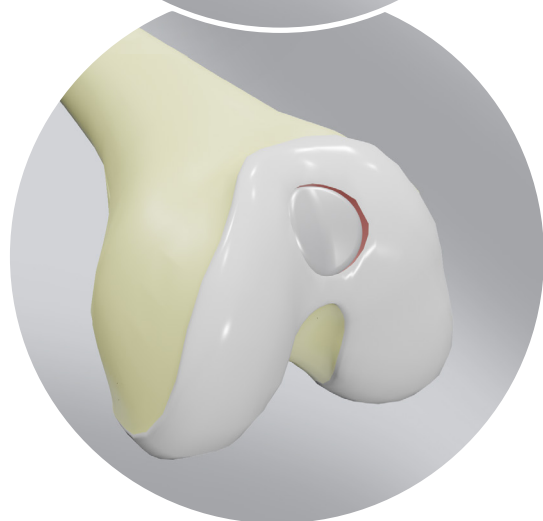


Patient presents with a painful cartilage lesion in the trochlear groove.

- Arthroscopic assisted implantation is quick and straightforward.
- Joint disruption is minimized.
- Anatomy is preserved.
- Unique implant design and construction restores articulating surface.
- Patient rapidly recovers and returns to activity.



Reference No.	Description
115-5101	BioPoly 15mm Standard Trochlea Implant
115-5102	BioPoly 15mm Shallow Trochlea Implant
115-5103	BioPoly 15mm Dysplasia Trochlea Implant
115-5104	BioPoly 20mm Standard Trochlea Implant
115-5105	BioPoly 20mm Shallow Trochlea Implant
115-5106	BioPoly 20mm Dysplasia Trochlea Implant
115-5500	Instrument Kit



BioPoly® RS device is implanted utilizing a reusable instrument kit. Please contact a BioPoly, LLC representative to learn more about the benefits of the BioPoly® RS Trochlea System. [Info@BioPolyortho.com](mailto:Info@BioPolyortho.com)

