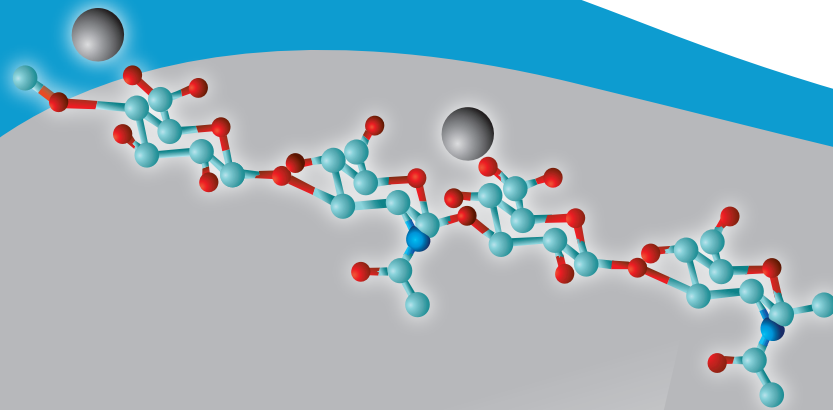


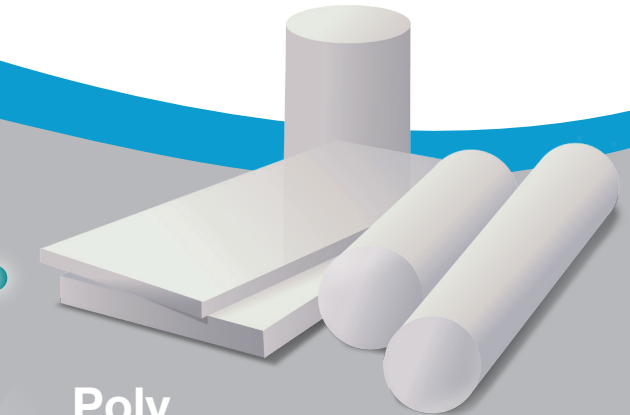
BioPoly[®] RS

Shoulder System

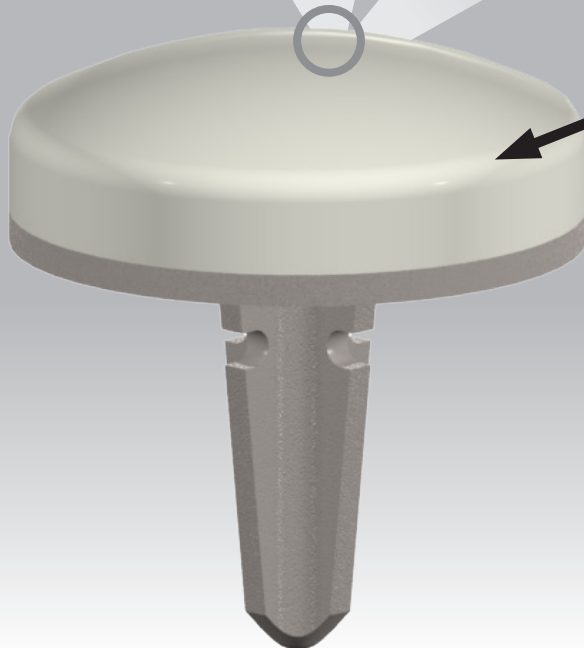
Shoulder partial resurfacing device
made from a microcomposite of
Hyaluronic Acid and UHMWPE



Bio
Hyaluronic Acid



Poly
UHMWPE



BioPoly[®]

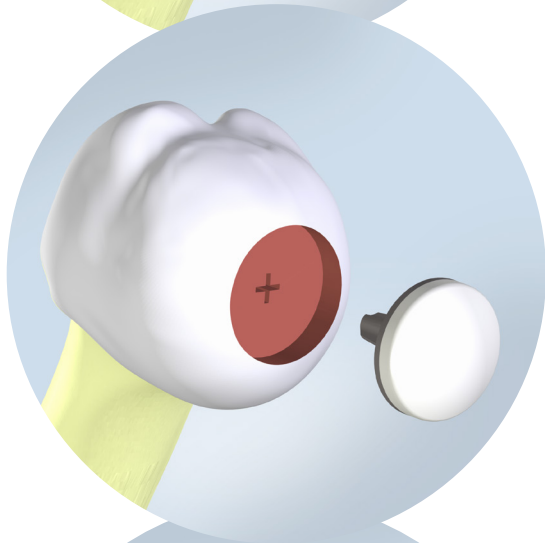
Hydrophilic polymer provides
a smooth and lubricious
surface to interact favorably
with native joint tissues and
carry anatomical loads

BioPoly RS Shoulder Implant

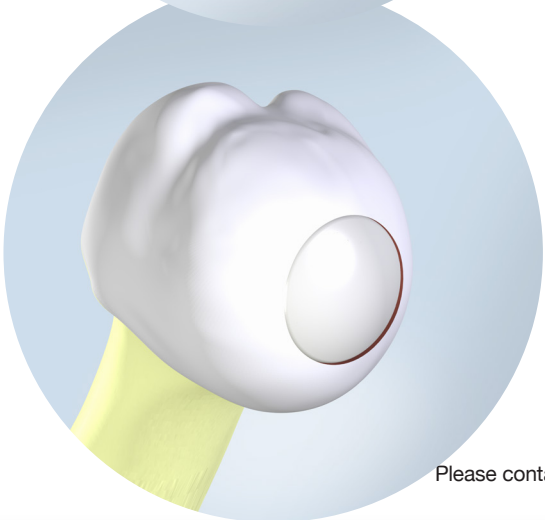


Patient presents with a painful cartilage lesion of the humeral head.

- Arthroscopic assisted implantation is quick and straightforward.
- Joint disruption is minimized.
- Anatomy is preserved.
- Unique implant design and construction restores articulating surface.
- Patient rapidly recovers and returns to activity.



Reference No.	Description
120-5003	BioPoly 25mm Partial Resurfacing Shoulder Implant (Small)
120-5004	BioPoly 25mm Partial Resurfacing Shoulder Implant (Large)
120-5005	BioPoly 30mm Partial Resurfacing Shoulder Implant (Small)
120-5006	BioPoly 30mm Partial Resurfacing Shoulder Implant (Large)
120-5500	Instrument Kit



25 mm – Small

25 mm – Large

30 mm – Small

30 mm – Large

BioPoly® RS device is implanted utilizing a reusable instrument kit. Please contact a BioPoly, LLC representative to learn more about the benefits of the BioPoly RS Shoulder System. Sales@BioPolyortho.com

